

Exporting Images From Lightroom Classic

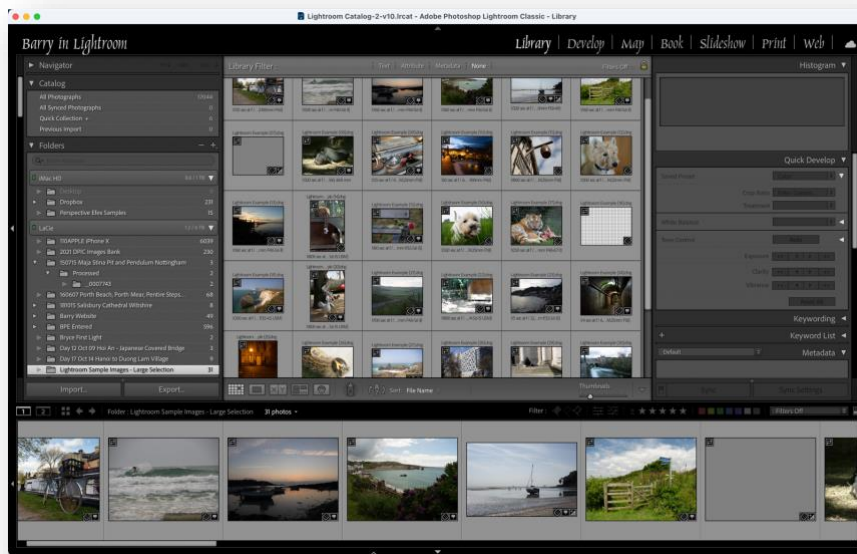
Many photography clubs and national exhibitions require the competition entrant to resize their images to suit the projection equipment being used to judge the images. Typically the entry requirements state that: “Image files must be in RGB mode (even for monochrome images) and in the sRGB colour space. Files must be saved in JPEG format: saving at not less than quality 10 (80%) is sufficient.

The maximum image dimensions are 1,600 pixels horizontal by 1,200 pixels vertical. Images file with larger pixel dimensions than these limits, and any Image file larger than 2MB, will not upload”.

Configuring settings in Lightroom Classic to meet your output needs

Lightroom Classic has the ability to use an export facility built into the programme to allow the user to resize image/s and then to save an export pre-set for future use.

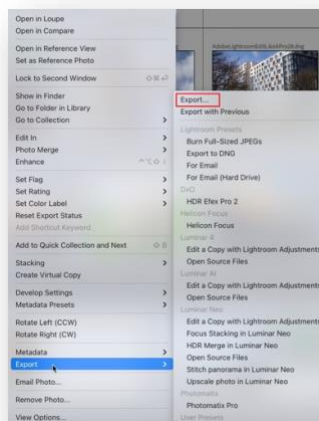
The first choice to be made is to export the images from Lightroom Classic to your internal disc drive.



In the Library or Develop module, select the images to be exported.

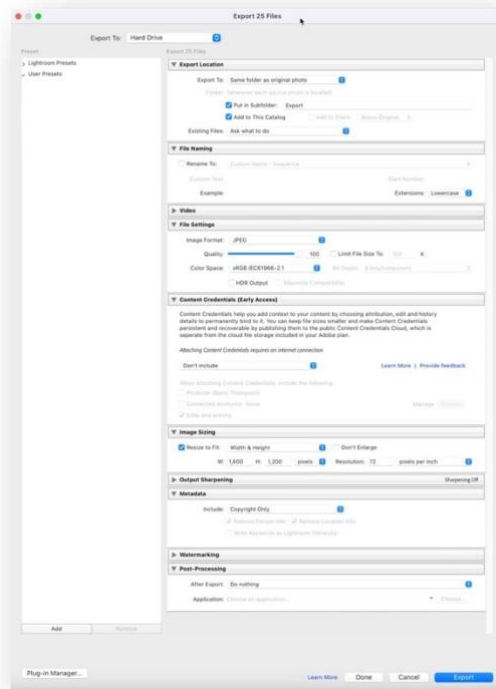
Use Shift or Cmd or (Shift or Ctrl on PC) to select multiple images.

Go to File → Export or use the shortcut Cmd + Shift + E (Ctrl + Shift + E on PC), or right click on one of the selected images. In the context menu that appears select Export and a sub-menu will appear, see below. In that sub-menu select Export.



Exporting Images From Lightroom Classic

This dialogue box appears:



In this dialogue box select the items shown:

Export Location Panel

- Export to: Hard Drive
- Export To: Same folder as original folder
- Tick Put in Subfolder: Type in an appropriate name e.g. Export
- Tick Add to This Catalog

File Settings Panel

- Image Format: JPEG
- Quality 100%
- Color Space: sRGB

Image Sizing Panel

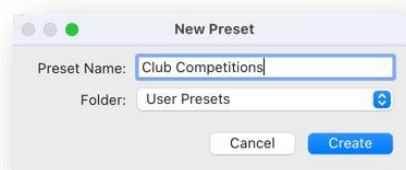
- Tick Resize to Fit, select Width and Height from the dropdown menu
- Set W: 1,600 set H: 1,200
- Resolution 72 pixels per inch

Metadata Panel

- Select Copyright Only from the dropdown menu.

As this pre-set will be needed again in the future, in the bottom left of the panel click Add.

This window will appear:

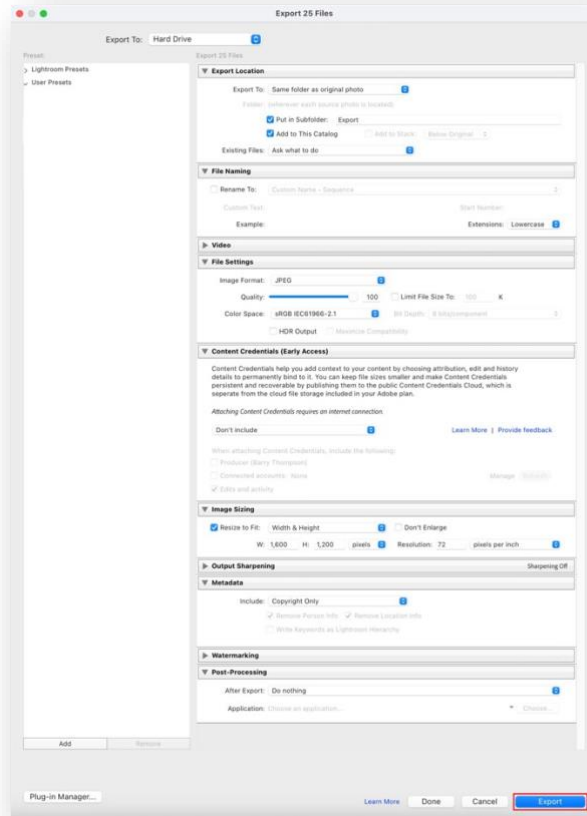


Exporting Images From Lightroom Classic

Type in the pre-set name “Club Competitions”, click create and the pre-set will be saved in the pre-set panel for future use.

Clicking Export at the bottom right of this panel Lightroom will process and save your images according to the selected settings.

This process gives you complete control over the quality, size, and output specifics of your images.



These are some typical examples of resized image dimensions when using this export pre-set:

- iPhone portrait image 3024px x 4032px resized to 900px x 1200px
- Nikon Z6II landscape image 6048px x 4024px resized to 1600px x 1065px
- Competition portrait image 3000px x 3827px resized to 941px x 1200px
- Competition panorama image 5017px x 1899px resized to 1600px x 606px
- Competition image 4024px x 4024px resized to 1200px x 1200px

It can be seen from the above that this one pre-set will resize the above mentioned images so that they remain within the competition/exhibition specified size of 1600px x 1200px.