

This is an illustration of the workflow used, from capturing the image in the camera to the output as a print, as a file suitable for projecting/displaying on a website or computer screen or as an image suitable for including in a book of photographs. Shoot in the Raw file format.

CAPTURE

Raw File
Composition
Lighting
Exposure
Focus
Colour Space in Camera - important if shooting JPEG images

IMPORT

Memory Card to Computer
Folder Naming Convention
Backup immediately to a second internal/external drive.

ORGANISE

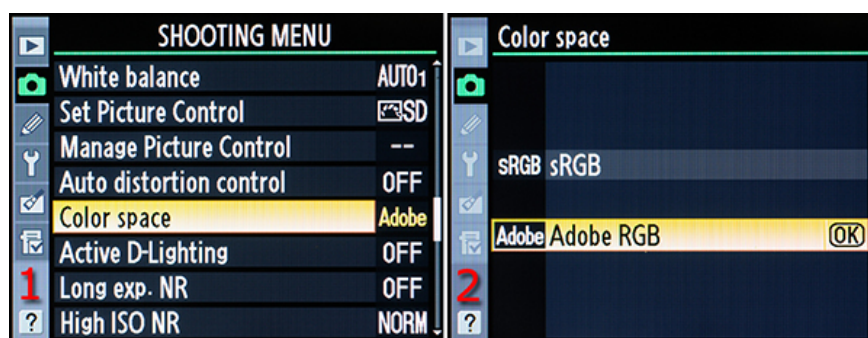
Decide where the images are to be stored. Select images to edit, apply star ratings in Adobe Bridge or Lightroom.

COLOUR WORKING SPACE SETTINGS IN CAMERA, PHOTOSHOP, LIGHTROOM and CAMERA RAW

Choosing Camera Colour Space

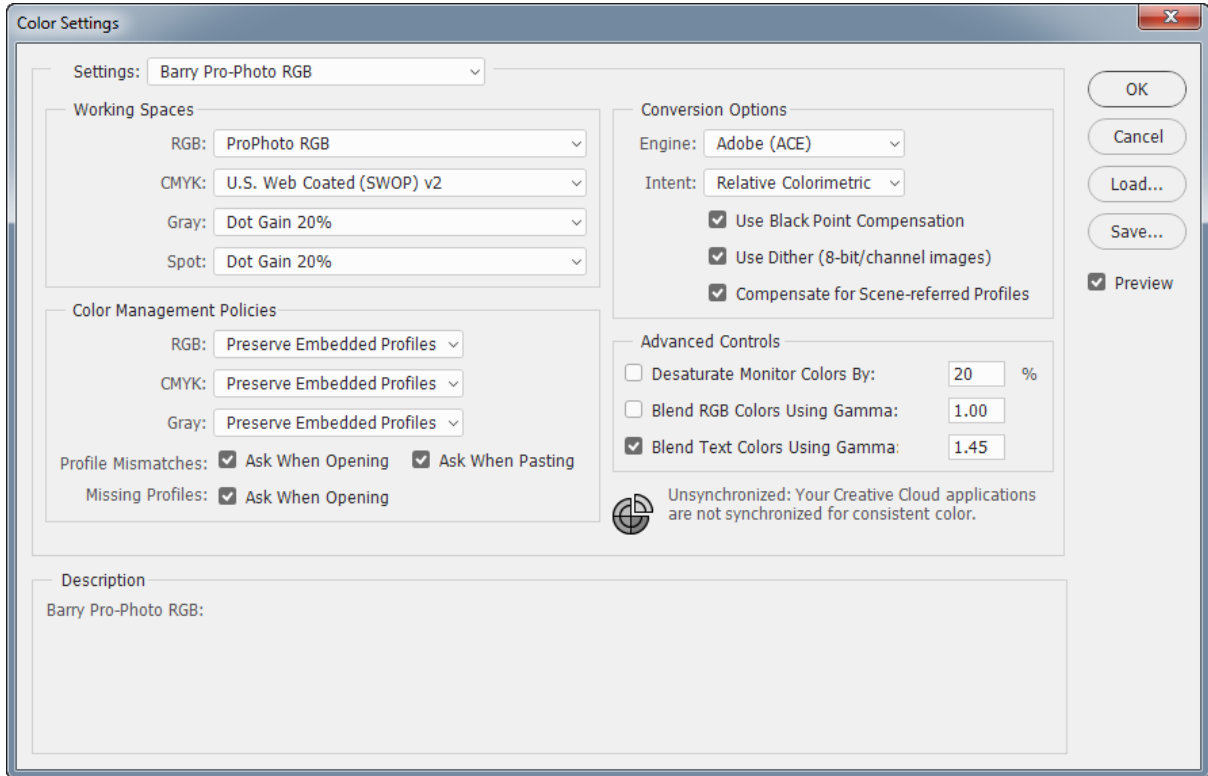
Colour spaces are an interesting and important part of digital photography. They help your images fit into a much broader range of imaging devices. Software, printers, monitors, and other devices recognize which Colour space is attached to your image and use it, along with other colour profiles, to help balance the image to the correct output colours for the device in use.

It is only important to set the colour space in the camera if images are being shot in JPEG format. The two Colour spaces available on Nikon cameras have different gamuts, or ranges of colour. They are called sRGB and Adobe RGB. You'll find the colour space choices on the Shooting Menu, as shown in the diagram below.

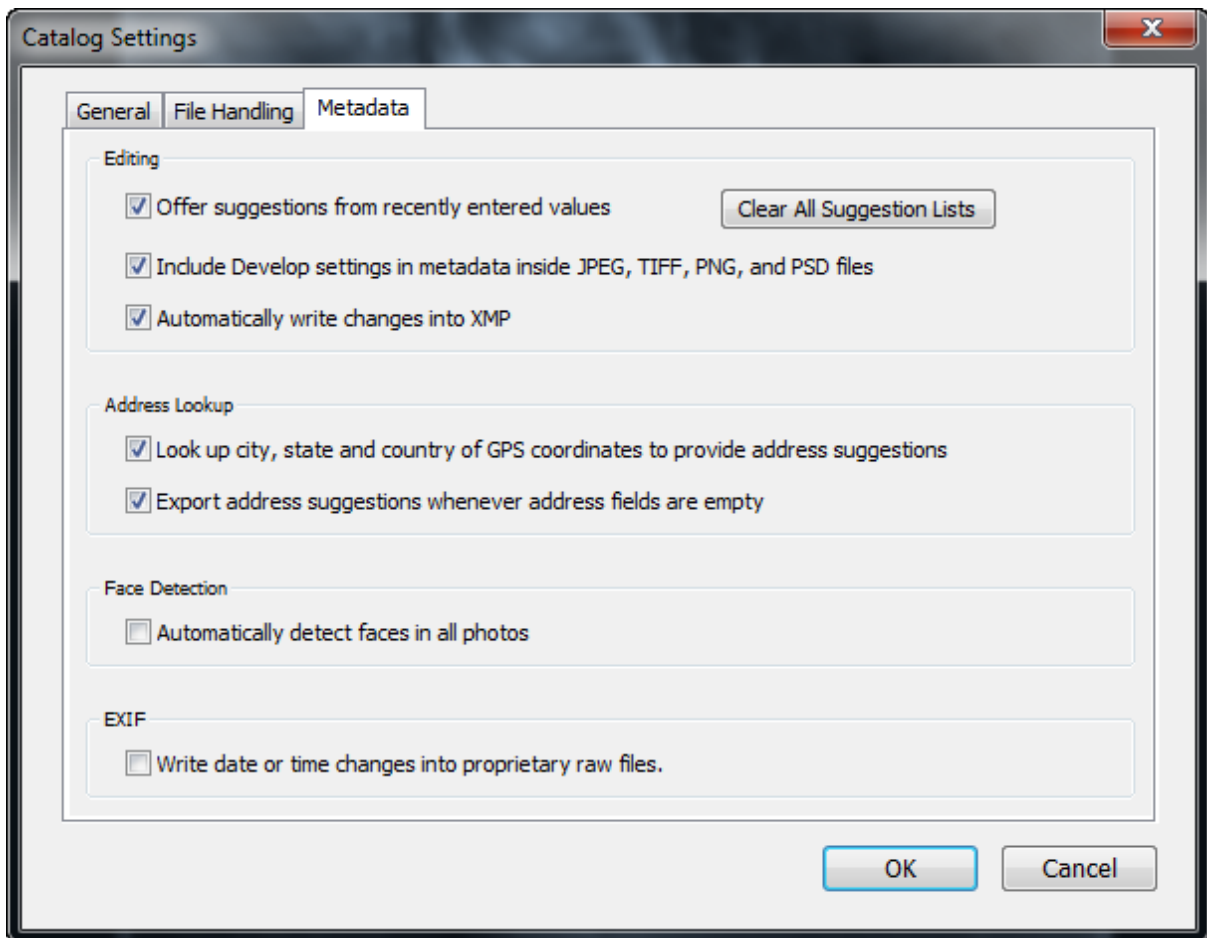


Adobe RGB uses colours from a broader selection of the total colour range, so it has a wider gamut. If you are taking JPEG images that might be printed, Adobe RGB is often the best colour space to use.

Photoshop Colour Preferences



LIGHTROOM Preferences in Catalog (sic) Settings



CAMER RAW Preferences



DEVELOP - Non-Destructively

Adobe Bridge → Camera Raw → Remove Lens Distortions

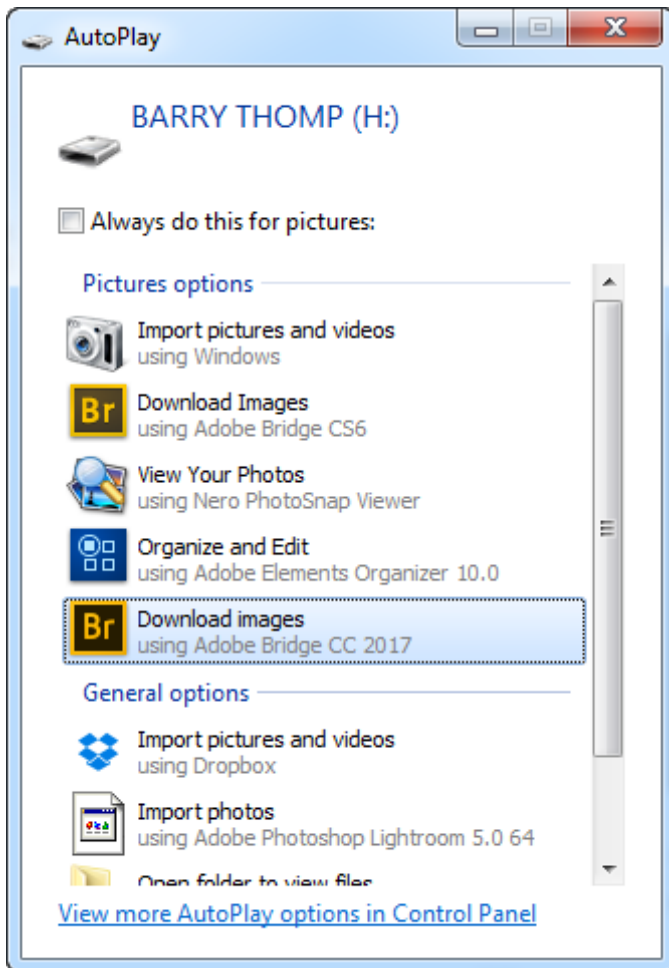
Computer → Lightroom

(These changes are stored within a text file with file extension .XMP)

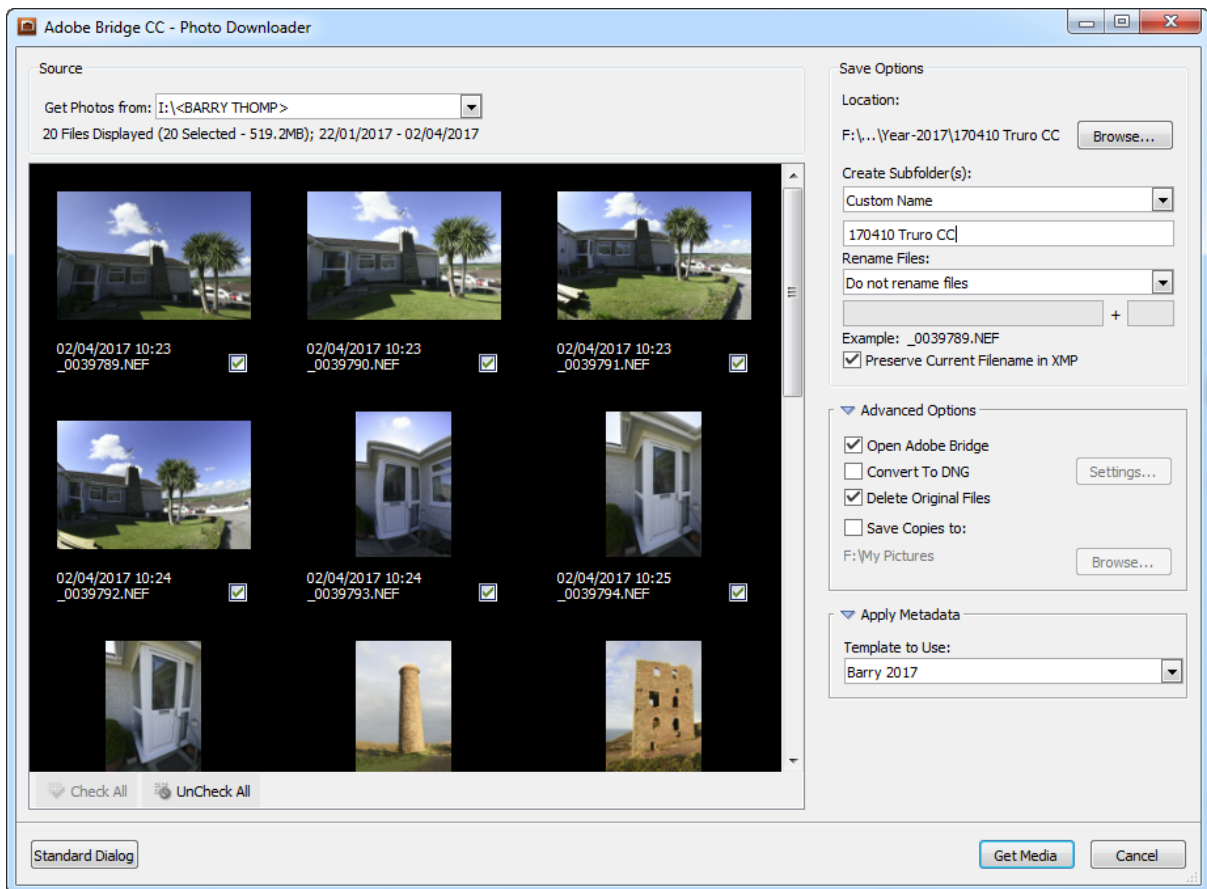
IMPORT

A dedicated card reader is used to upload the images from the memory card to the desktop computer, using the Autoplay feature in the Operating System, using the Bridge CC Download Images option.

The HP Pavilion Dv6 Laptop has a memory card slot and this is used on this computer to upload images.



This is the dialogue box that appears after clicking the Download Images icon.

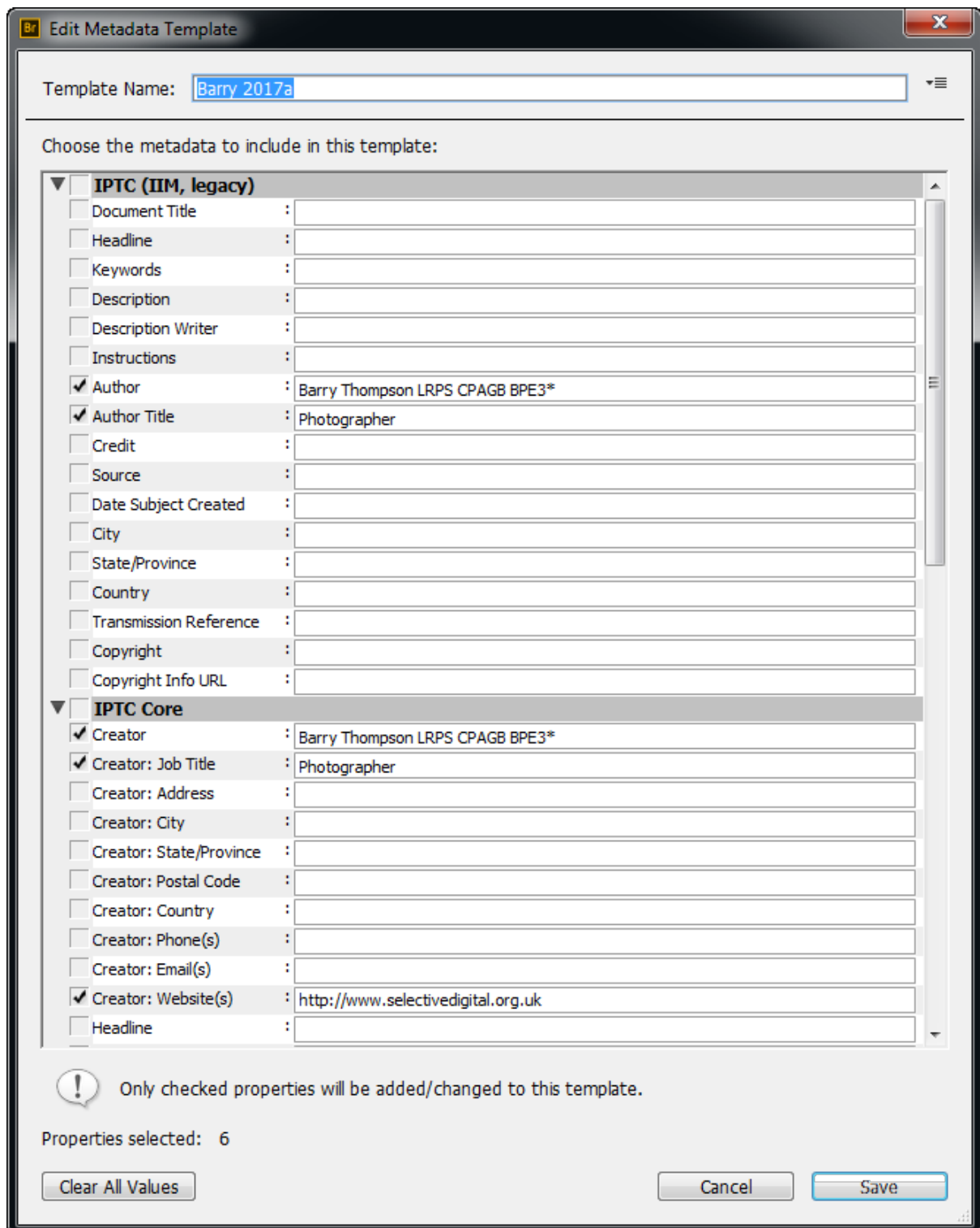


This has previously been setup to save the images in this location: F:\My Pictures\Year-2017. Note the Folder name that has been typed in the field where a custom folder can be added, in this case “170410 Truro CC”.

After clicking the “Get Media” button at the foot of the dialogue box, the images will be copied to the pre-set location. At the same time an XMP file is created from a template set up in Adobe Bridge that contains the authors copyright and contact details as well as the EXIF data created and added to the image by the camera during the taking stage.

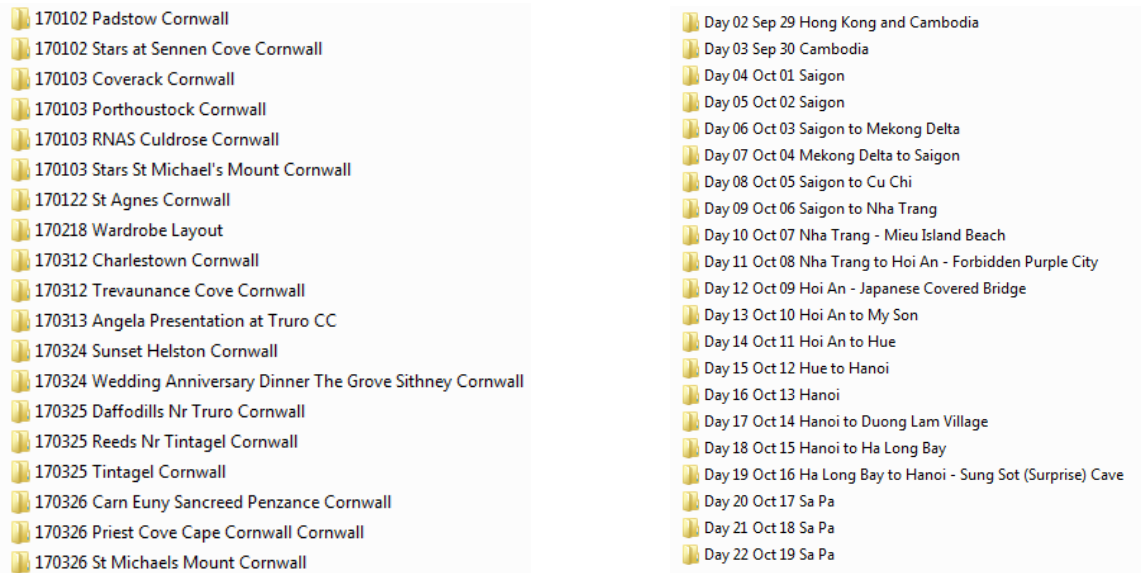
Before deleting the images from the memory card, the folder of imported images is backed up to a second drive in the computer.

Metadata Template Created in Adobe Bridge (Tools → Metadata Template)



ORGANISE

This involves setting up a folder/directory structure on the storage device. This is a screenshot of part of the 2017 folder where images are stored, and a screenshot of the folder structure from an overseas visit.



Star Ratings

These are used both in Adobe Bridge and Lightroom to allocate a rating depending on the use to which the images will be put. For example a one star rating could be used for images that will be used on a website, whereas a four star rated image might be printed either as a competition image, or for a photo book.

When these images are exported from Lightroom images for web are allocated sRGB colour space, 72 pixels per inch and image size 1400 x 1050 pixels.

Images for printing will be edited on Photoshop with ProPhoto colour space, 300 pixels per inch, 16 bit colour at a size appropriate for the print. These edited images will be stored in a sub-folder with a name "Processed".

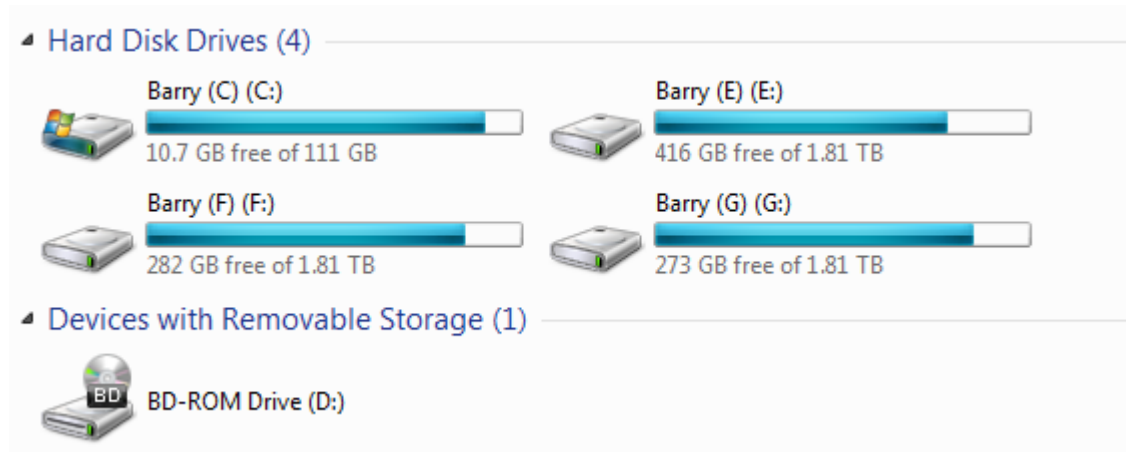
Editing in Lightroom

After importing the images into the Lightroom Catalog (sic) selections are made using the aforementioned star ratings, if the star ratings have been applied in Adobe Bridge, these will be carried forward into Lightroom.

The editing in Lightroom will involve correcting verticals and horizontals, exposure, noise reduction and cropping. All of these are non-destructive editing techniques. If further work on the image is needed then the image will be loaded into any one of a number of plug-ins from Topaz Labs or Nik or loaded directly into Photoshop where further editing tools, not available in Lightroom, can be used.

STORAGE DEVICES

The Custom Built Windows PC has the following devices:



Drive C is a Solid State Drive (SSD) for speed of access, 120GB capacity, stores programmes only

Drive D is the DVD Read/Write device

Drive E is a standard 2TB drive use to archive images from 2009-2014

Drive F is a standard 2TB drive use to store images from 2015-2017 and all other data, word processing, spreadsheets and websites etc.

Drive G is a standard 2TB drive use as a backup and is a mirror of drive F.

EXTERNAL BACKUP DEVICES

Drive X is a backup of drive E

Drive Y is a backup of drive F

Drive Z is a backup of drive G

USEFUL SOFTWARE

Adobe Bridge CC (free), is also part of the Adobe suite of CC programmes, website:

<https://creative.adobe.com/products/download/bridge>

Adobe Photoshop CC and Adobe Photoshop Lightroom CC. Subscription £10.10 /month, website: <https://creative.adobe.com/plans>

Google Nik Collection Plug-ins (paid for) website: <https://nikcollection.dxo.com/>

Topaz Plug-ins (paid for) website: <http://www.topazlabs.com/>

Everything (search computer for files, free) website: <https://www.voidtools.com/>

GoodSync backup software, (paid for) website: <https://www.goodsync.com/>

The Turning Gate Lightroom Plug-ins (paid for) website:

<http://theturninggate.net/>