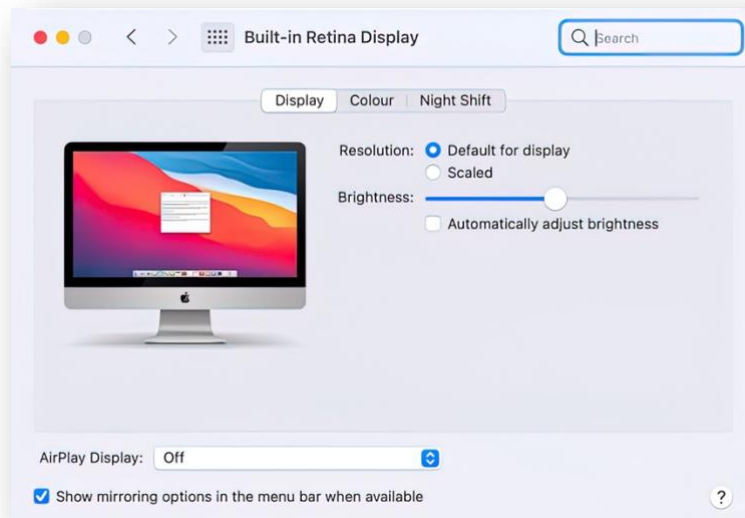


Brightness of screen on Mac



Calibrate monitor



Printer

- Print nozzle check pattern



- Check Ink Levels



- Check Ink Stock there are 9 cartridges in the Epson Stylus Pro 3880 (Photo Black, Light Black, Matte Black, Light Light Black, Vivid Magenta, Vivid Light Magenta, Cyan, Yellow, Light Cyan)



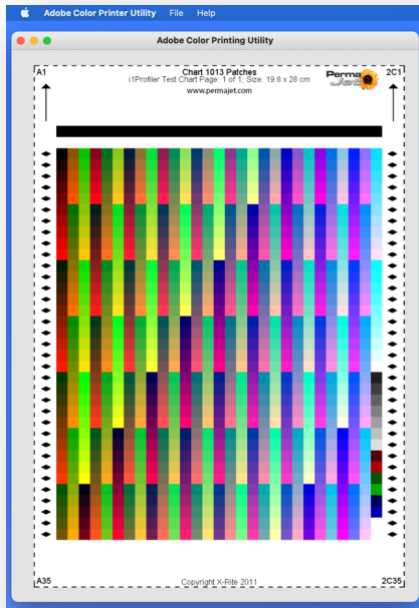
Check printing paper stock

- Permajet Oyster 271 A3
- Permajet Photo Lustre 310 A3
- Permajet Fine Art A3

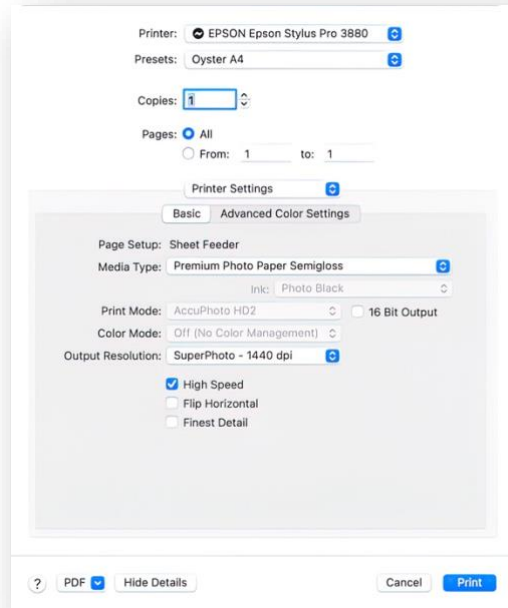
Creating A Custom Profile

- The free Adobe Color Printer Utility only has one function. It is used to print the colour charts (targets) used to profile ('characterise') the printer. These charts are then be posted to the paper manufacturer, and on receipt, will be measured ('read') by a spectrophotometer from which a custom profile is created.
- This is the only function of the utility. It cannot be used to print photographs, as it cannot use ICC Colour Management, which is the whole point! Photoshop, Lightroom and other suitable applications will be used for printing actual images, after the profile is installed on the host computer.
- Apart from the application used, the printing process for both the targets and your actual images, using your new Custom ICC Printer Profile, must be absolutely identical.

## Printing Work Flow

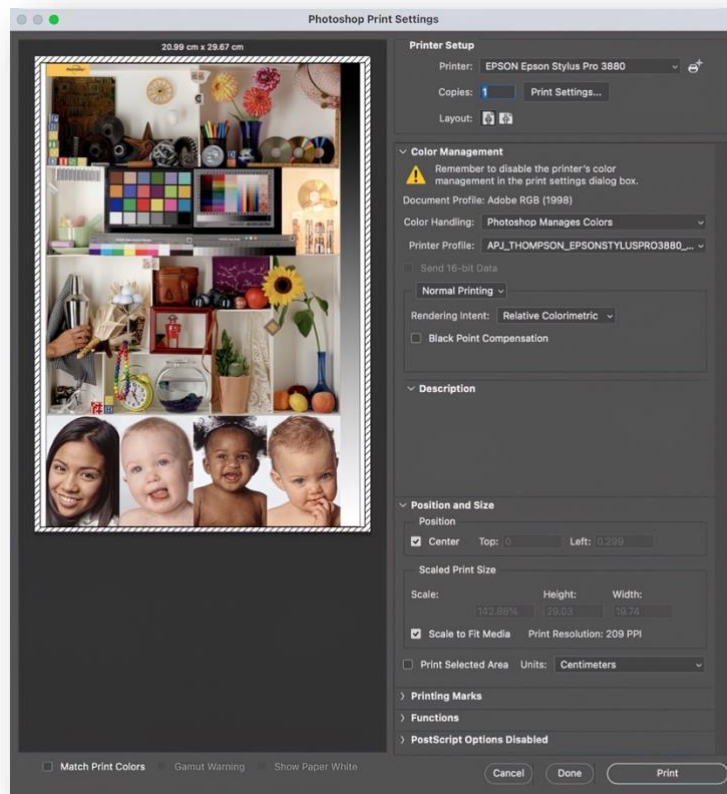


Patches To Be Printed

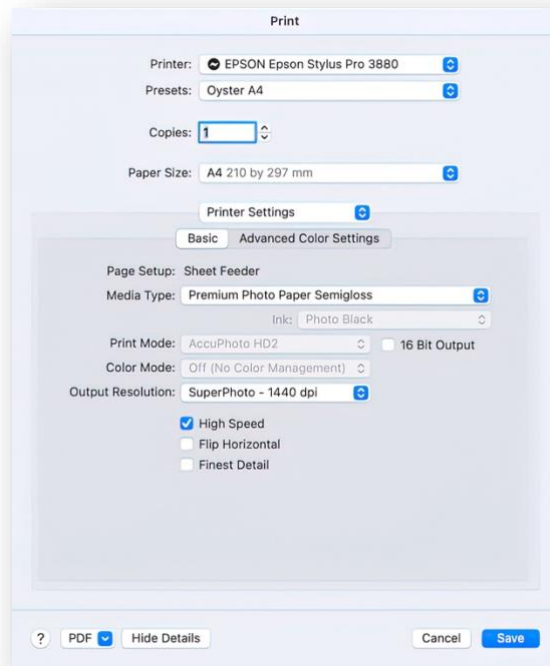


Printer Settings

Printer setup to print image  
Photoshop manages colours  
Printer profile selected



Paper size and Media type selected in Print Settings



If the prints are to be mounted, then a stock take of mount and backing boards is needed.



Mounting prints is covered in the worksheet “Mounting Prints For Competitions And Exhibitions” on my website on the Technical Articles page [here](#).