

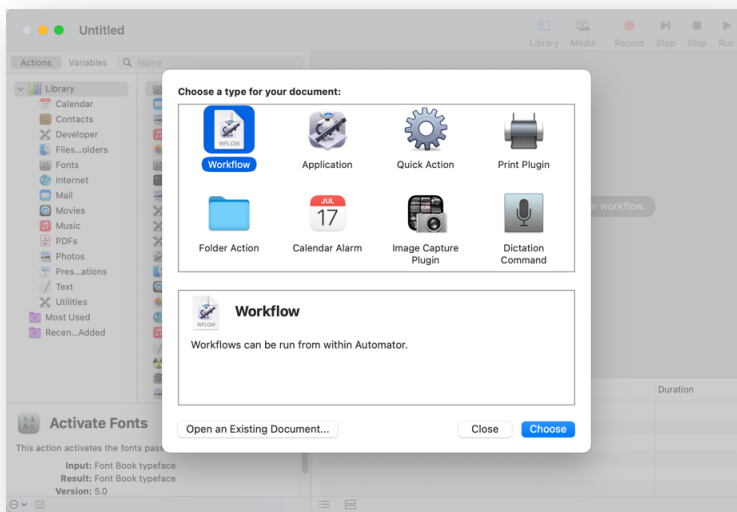
There are occasions where it would be very efficient to use a "Send To" facility on a computer.

When wanting to load pictures into Lightroom Classic it can be quite tedious to have to go through the File > Import Files and Video then trawl through a whole directory structure to find an individual picture or a folder containing pictures.

The following procedure will allow the creation of a "Send To" service in Mac OS. What this means is that when this service is created, it is possible to select an image file or a folder of images and send them directly to, in this case, Lightroom Classic.

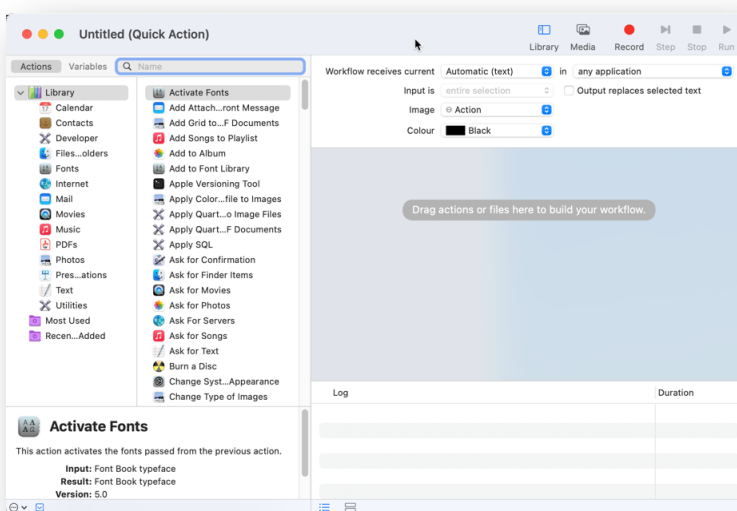
The Automator.app is used to create this service.

Locate this app in the Applications folder, load it and in the window that appears click on "New Document", this window will appear:

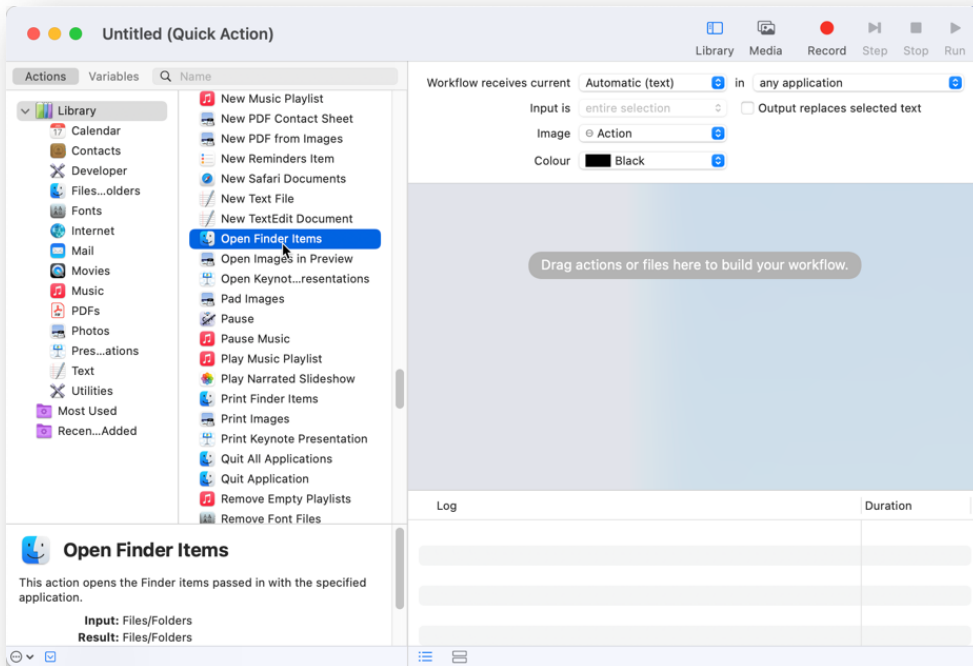


Click on the "Quick Action" icon, then click Choose.

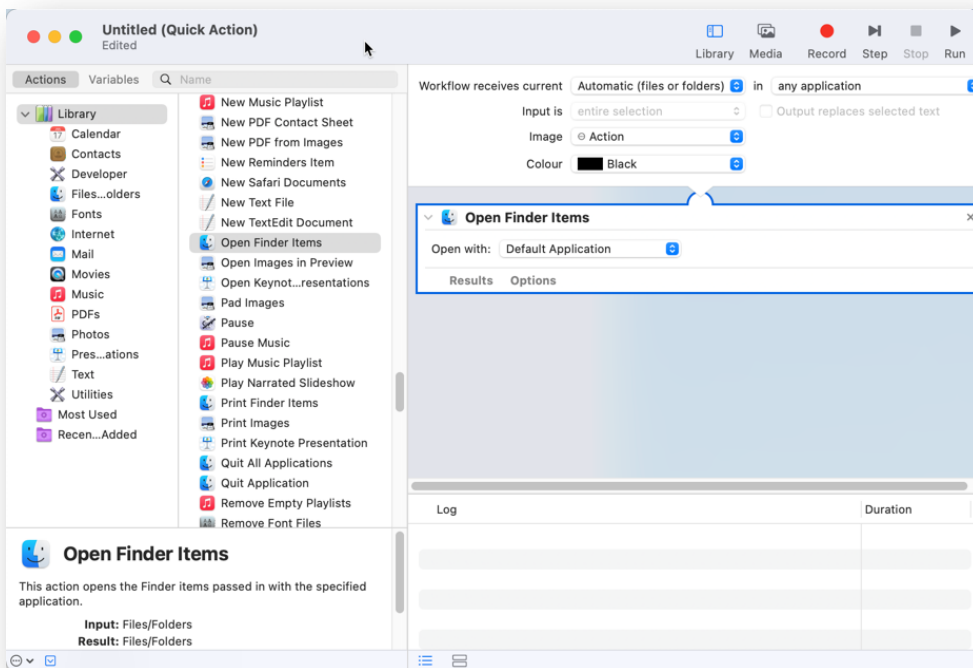
This window will appear:




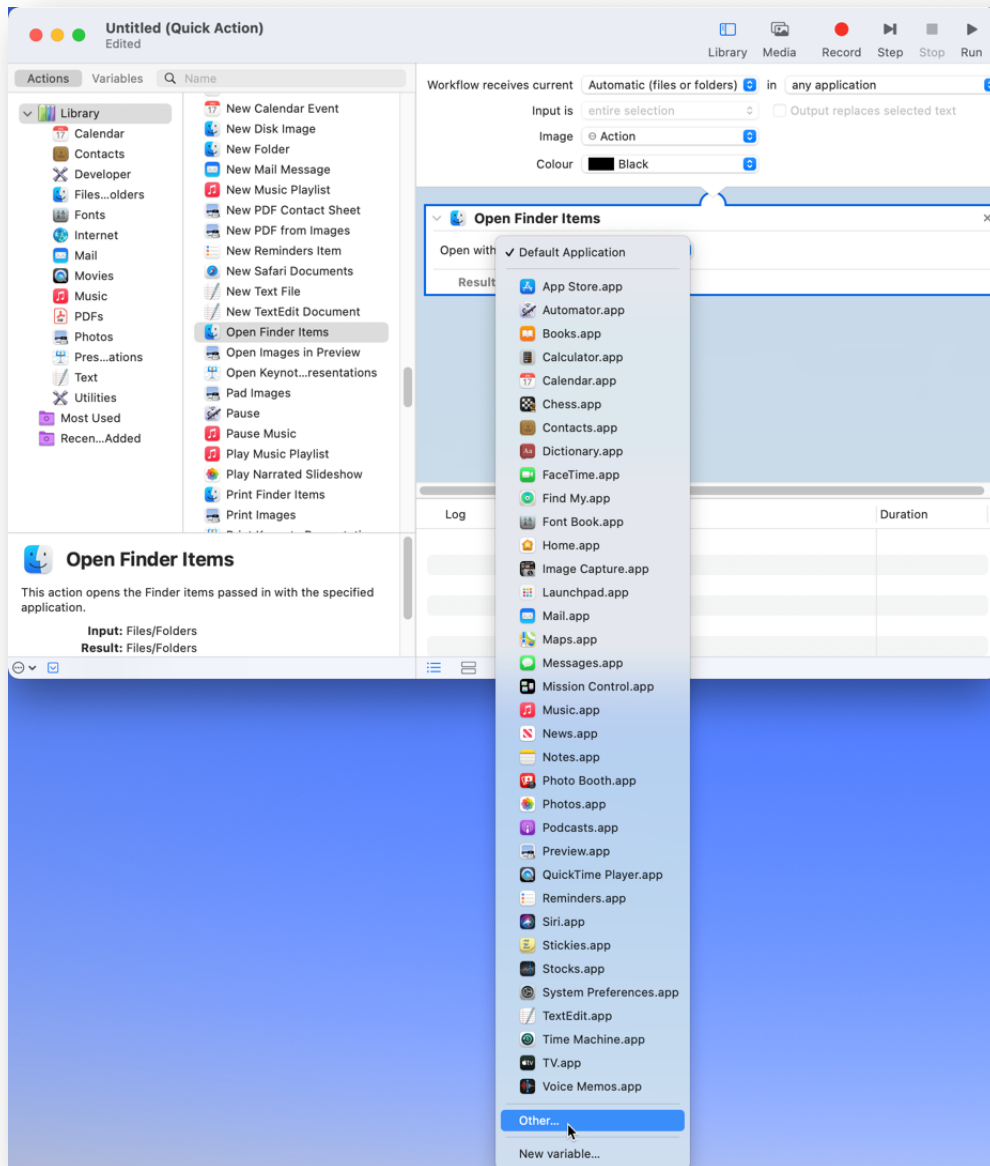
In the middle list headed with “Activate Fonts”, scroll down to “Open Finder items”:



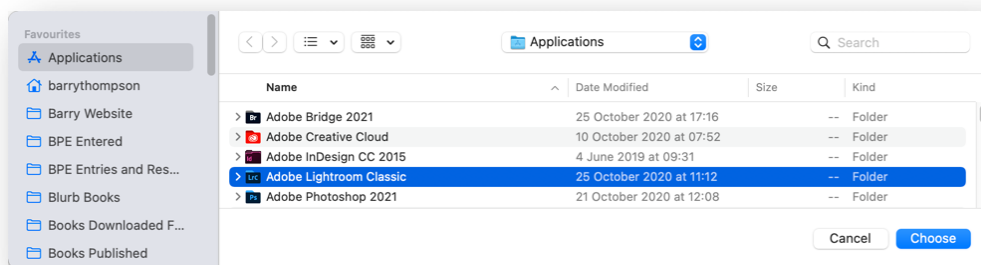
Double Click on “Open Finder items” the following window will appear:



Under "Open Finder Items" in the right hand window then click on "Open with:" click the  icon to reveal a list of default applications:

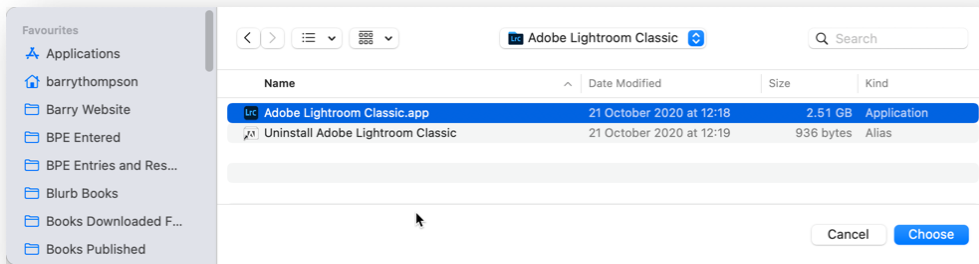


Click on Other... to reveal a list of other applications that can be chosen:

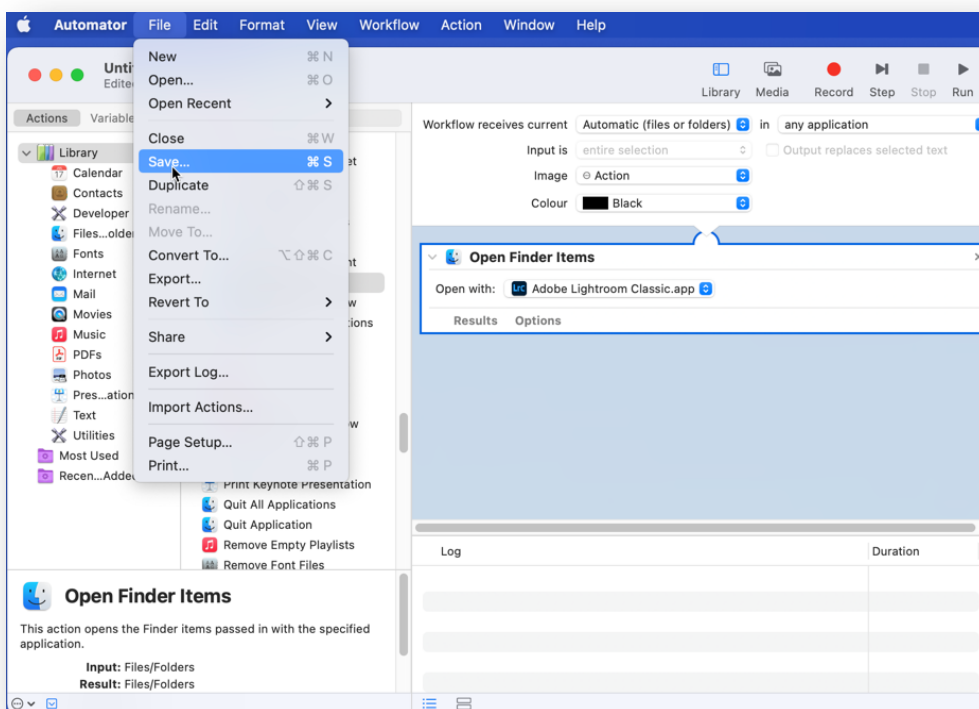


Select Lightroom Classic, this is a folder not the app. Then click Choose:

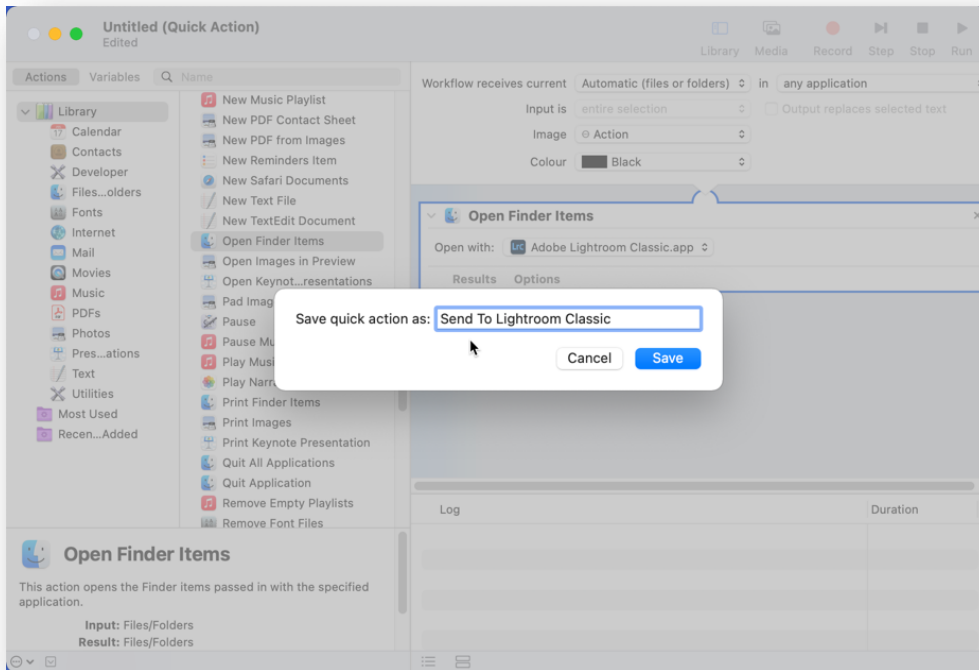
Another window will open where the Lightroom Classic.app can be selected, again select it, then click Choose:



Now go to the Mac OS Menu Bar, click File then click Save...



Type in the following text "Send To Lightroom Classic"

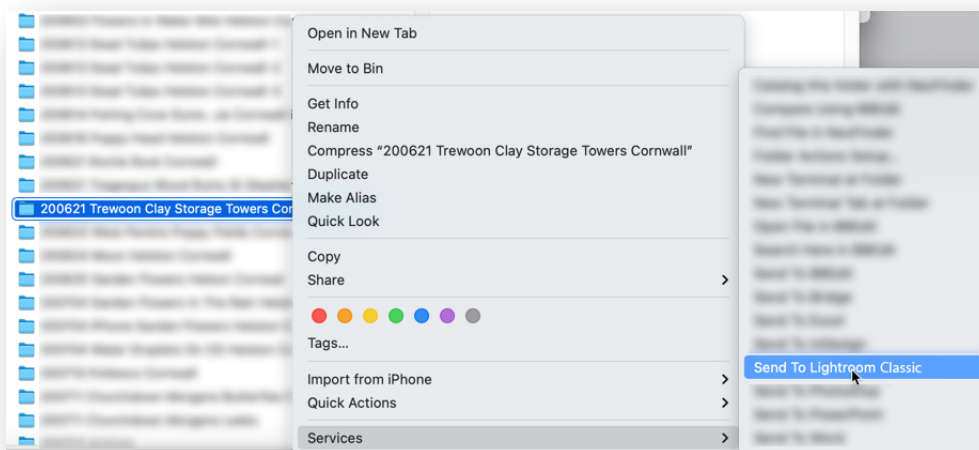


Now quit the Automator.app

How to use the service that has been created.

Ensure that Lightroom Classic is not loaded. Otherwise the operation will fail.

Right click on an individual picture or a folder containing pictures:



In the context menu click on Services, then click on "Send To Lightroom Classic". The file or folder will open the Import dialogue box in Lightroom Classic. When the images have rendered on the page, click the "Import" button and the file or folder of images will be imported into Lightroom Classic.